



# SCARA-LU SERIES

## Product Scope

HIWIN - ALICE LIAO 廖晨羽

NOV 20, 2019

# Description of Model Name

## Model Comparisons

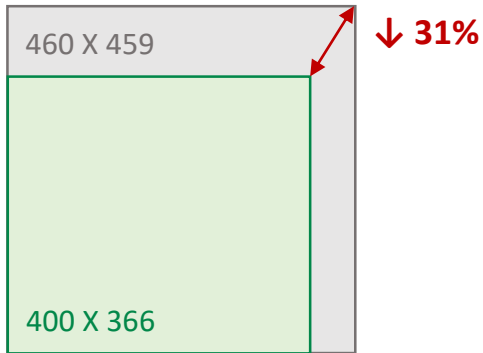


Current SCARA

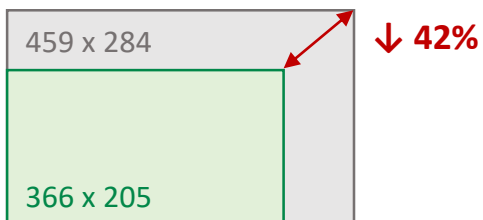


SCARA-LU Series

### Controller Size (W x D)



### Controller Size (D x H)



Manipulator	Max Payload	Up to 6kg	Up to 10kg (Mid-2020)	✓
	Max Arm Length	Up to 600mm	Up to 800mm (Mid-2020)	✓
Controller	Communication	3 (Standard)	4 (Standard) 2 (Optional)	✓
	Dynamic Tracking	N/A	Optional	✓
	Controller Size	Standard	Compact Design (↓50%)	✓
Other	Remote Operating	N/A	Support (Compatible with Caterpillar)	✓

## Description of Model Name

### RS405-X00-X00-LU Series

#### Model Example

RS405 – 400 – 200 – LU

#### Identification Code

LU Series

#### J3 Working Range

200 200mm Ball Spline

400 400mm Ball Spline

#### Maximum Reach Radius

400 Total Arm Length 400mm

500 Total Arm Length 500mm

#### Series

RS405 SCARA Robot with 5kg Payload



## Description of Model Name

### RS410-X00-X00-LU Series

#### Model Example

**RS410 – 600 – 400 – LU**

			Identification Code	
			LU	Series
			J3 Working Range	
			200	200mm Ball Spline
			400	400mm Ball Spline
		Maximum Reach Radius		
		600	Total Arm Length 600mm	
		700	Total Arm Length 700mm	
		800	Total Arm Length 800mm	
		Series		
RS410	SCARA Robot with 10kg Payload			



## Robot Specification

### RS405-X00-X00-LU Series

Item		Unit	Specification			
Model Name		-	RS405-400-200-LU	RS405-400-400-LU	RS405-500-200-LU	RS405-500-400-LU
Installation		-	Floor			
Degrees of Freedom		axis	4			
Rated Payload		kg	2			
Maximum Payload			5			
Arm Length	J1+J2	mm	400 mm	400 mm	500 mm	500 mm
	J1		225 mm	225 mm	325 mm	325 mm
	J2		175 mm	175 mm	175 mm	175 mm
Maximum Motion Range	J1	deg	±130			
	J2		±130			
	J3	mm	200/400			
	J4	deg	±360			
Repeatability	J1+J2	mm	±0.02			
	J3	mm	±0.01			
	J4	deg	±0.01			
Protection Rating		-	IP20			
Applicable Controller		-	RC4			

## Robot Specification

### RS410-X00-X00-LU Series

Item		Unit	Specification		
Model Name		-	RS410-600-X00-LU	RS410-700-X00-LU	RS410-800-X00-LU
Installation		-	Floor		
Degrees of Freedom		axis	4		
Rated Payload		kg	5		
Maximum Payload			10		
Arm Length	J1+J2	mm	600	700	800
	J1		325	425	525
	J2		275	275	275
Maximum Motion Range	J1	deg	±130		
	J2		±150		
	J3	mm	200/400		
	J4	deg	±360		
Repeatability	J1+J2	mm	±0.025		
	J3	mm	±0.01		
	J4	deg	±0.01		
Protection Rating		-	IP20		
Applicable Controller		-	RC4		

## Controller Specification

### Robot Controller RC4



Item	Specification	
Model	Robot Controller RC4	
Controllable Axes	4 Axes, AC Servo Motors	
Digital I/O (Standard)	Input	16
	Output	8
Functional I/O (Standard)	Input	8
	Output	8
Communication Port (Standard)	Ethernet	1
	RS232	1
	RS485	1
	USB3.0	2
Communication Port (Option)	CC-Link	1
	ProfitNet I/O	1
Optional Module	Encoder Card	
	Digital Output Module (32 Channel)	
	Digital Input Module (32 Channel)	
	Digital Input/Output Module (16 DI/16 DO)	
Power Source	Single Phase 200 ~ 240 VAC, 50/60 Hz	
Rated Current	6A	
Maximum Current	20A	
Maximum Power Consumption	1.65kVA	
Insulation Resistance	100 MΩ or More	
Grounding	Below 100Ω	
Weight	13kg	
Leakage Current(mA)	30	

## Operating Environment

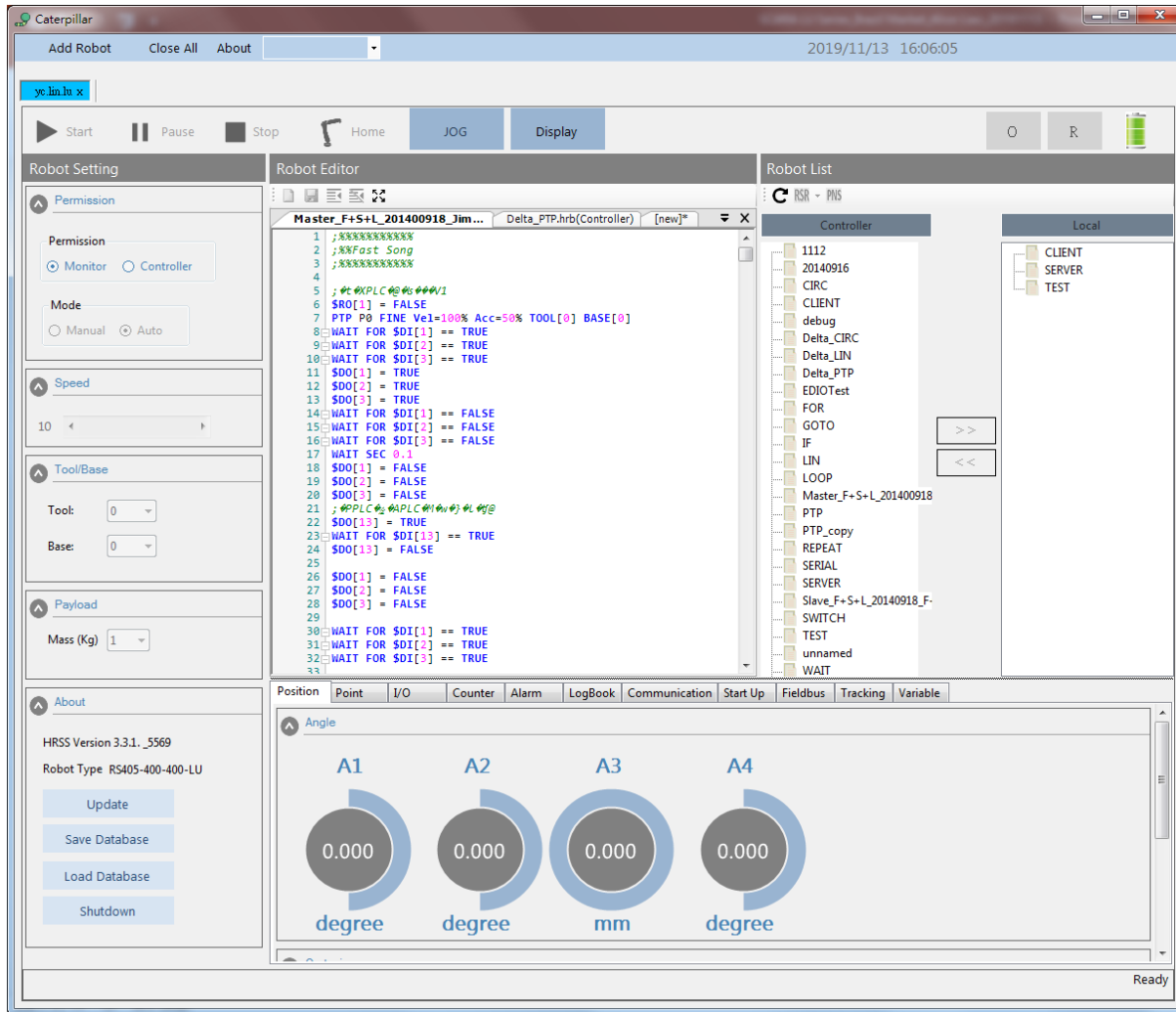
### Robot Manipulator and Controller

Environmental Condition	Operating Environment
Temperature	5°C ~ 45°C
Relative Humidity	20%~75% R.H. (No Condensation)
Mounting	Table
Power System	Single phase 50/60Hz 200~240VAC
Altitude	Up to 1,000m above mean sea level
Vibration	0.5G(4.9m/s <sup>2</sup> ) or less



# Remote Operating Software

Caterpillar



Highlight:

- ✓ Easy program copy between robots.
- ✓ Able to monitor up to 8 robots in the same time.

Function:

- ✓ Connect to HRSS offline for simulation.
- ✓ Support SCARA-LU, more robot model coming up.

Download Link:

[https://www.hiwin.tw/support/mar/rs405/rs405\\_400\\_200\\_LU.aspx](https://www.hiwin.tw/support/mar/rs405/rs405_400_200_LU.aspx)