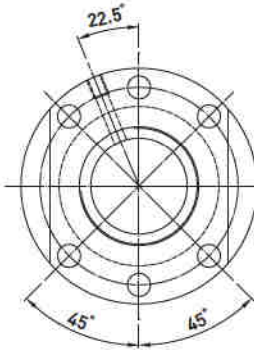
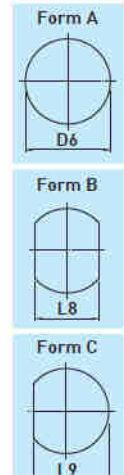
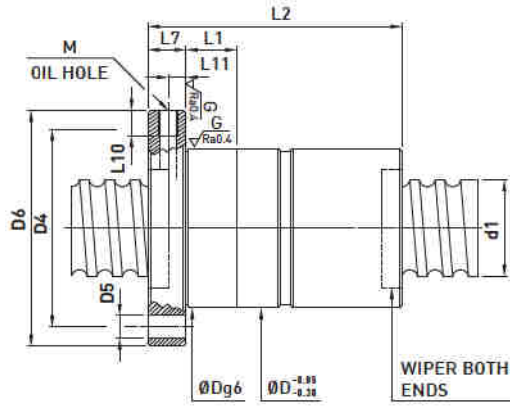
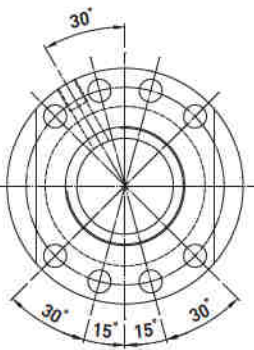


FDC Type ◀ Standard Product

TYPE 1



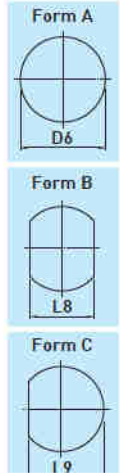
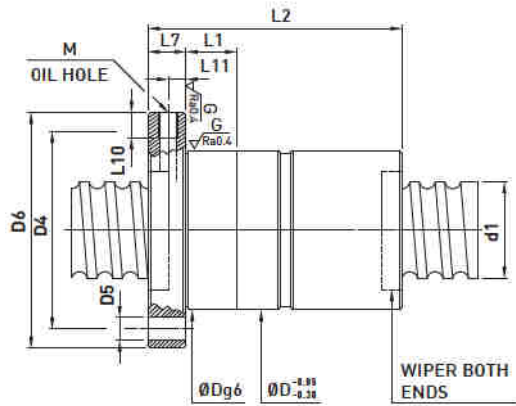
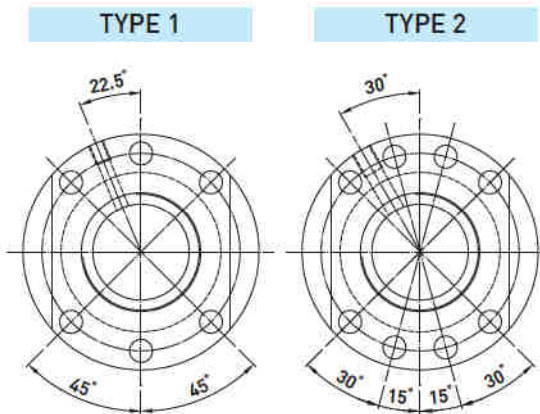
TYPE 2



Model	Size		PCD	RD	Ball Dia.	Circuits	Stiffness K (kgf/μm)	Dynamic Load C(kgf)	Static Load Cok(gf)	Nut			Flange				Oil Hole			Double starts	Incomplete Thread		
	Nominal Dia.	Lead								D	L1	L2	TYPE	Form A(D6)	Form B(L8)	Form C(L9)	L7	D4	D5			M	L10
14-10K3	14	10	14.6	10.724	3.175	3	31	920	1790	10	96												
15-10K3		10	16	12.869	3	3	34	930	1970	28	10	94	48	40	44								
15-16K2		16				2	21	610	1230	10	94												
15-10K3	15	10	15.6	12.324	3.175	3	33	960	1930	10	92												
15-20K2		20				2	20	630	1256	10	104												
16-16K2	16	16	16.4	13.124	3.175	2	23	680	1385	34	10	98	57	43	50								
20-10K4		10	21	17.868	3	4	57	1390	3560	10	114												
20-5K4		5				4	55	1490	3640	10	84												
20-10K3	20	10	20.6	17.324	3.175	3	42	1130	2660	36	10	98	58	44	51								
20-20K2		20				2	27	760	1730	10	118												
20-6K5		6	20.8	16.744	3.969	5	77	2420	5660	42	10	102	64	50	57								
20-8K5		8	21	16.132	4.763	5	77	2960	6505	45	10	132	65	51	58								
25-5K4		5				4	65	1650	4612	10	90												
25-10K3		10				3	50	1260	3370	10	104												
25-15K5		15	25.6	22.324	3.175	5	83	1980	5730	40	10	184	62	48	55								
25-20K3		20				3	51	1260	3436	10	164												
25-25K2		25				2	32	840	2170	10	142												
25-6K5		6				5	91	2720	7192	45	10	104	65	51	58								
25-8K5		8				5	92	2710	7170	48	10	128	68	54	61								
25-10K4		10	25.8	21.744	3.969	4	74	2210	5660	10	124												
25-12K4		12				4	74	2200	5640	10	138												
25-16K3		16				3	55	1670	4127	45	10	146	65	51	58								
25-20K3		20				3	55	1710	4290	10	164												
25-8K5		8	26	21.132	4.763	5	96	3480	8683	50	10	132	70	56	64								
28-6K5		6	28.8	24.744	3.969	5	93	2840	7966	10	102												
28-8K5		8				5	104	3690	9780	10	128												
28-10K5		10	29	24.132	4.763	5	105	3680	9760	10	148												
28-16K4		16				4	84	2970	7661	10	188												
32-5K4		5				4	77	1840	5960	48	10	80	70	54	62								
32-5.08K4		5.08	32.6	29.324	3.175	4	77	1840	5940	10	82												
32-6K5		6				5	111	3090	9480	56	10	100	86	65	75.5								
32-8K5		8				5	112	3080	9430	53	10	122	83	62	72.5								
32-8K5		8				5	112	3080	9460	10	122												
32-10K5		10				5	113	3080	9450	10	150												
32-15K4		15	32.8	28.744	3.969	4	91	2500	7440	10	184												
32-20K3		20				3	68	1900	5430	50	20	178	80	62	71								
32-32K2		32				2	44	1280	3530	20	178												
32-40K2		40				2	42	1240	3440	20	192												
32-8K5		8				5	112	3860	10914	55	10	132											
32-10K5		10				5	113	3850	10890	10	162												
32-12K5		12	33	28.132	4.763	5	114	3840	10870	56	20	180	86	65	75.5								
32-20K4		20				4	94	3190	8914	20	216												
32-25K3		25				3	70	2420	6500	54	20	198											
32-32K2		32				2	44	1620	4100	20	180												
32-10K5		10				5	119	5640	14480	10	158												
32-12K5		12	33.4	26.91	6.35	5	119	5620	14450	62	20	178	92	74	83								
32-16K4		16				4	96	4570	11390	20	188												
32-20K4		20				4	71	4240	10854	57	20	218	87	66	78								
36-6K5		6	36.8	32.744	3.969	5	118	3240	10632	56	10	106	86	65	77								
36-10K5		10				5	130	6010	16440	20	164												
36-12K5		12				5	131	5990	16420	66	20	178	96	73	84.5								
36-16K5		16				5	132	5960	16350	20	222												
36-20K4		20	37.4	30.91	6.35	4	105	4840	12880	65	20	220	95	72	83.5								
36-20K4		20				4	105	4840	12880	20	220												
36-36K2		36				2	51	2540	6240	61	20	194	91	68	79.5								
38-8K5		8	39	34.132	4.763	5	127	4190	13110	61	20	132	91	68	79.5								
38-10K4		10				4	107	5050	13790	20	144												
38-15K4		15				4	109	5020	13740	20	180												
38-16K5		16				5	137	6140	17340	20	220												
38-20K4		20	39.4	32.91	6.35	4	110	4990	13660	63	25	220	93	70	81.5								
38-25K4		25				4	109	4940	13560	25	258												
38-40K2		40				2	53	2590	6560	25	210												

Note: 1. Rigidity with preload: The axial load is calculated by 10% of dynamic load.
2. Circuits less than K5 also available.

FDC Type ◀ Standard Product



Model	Size		PCD	RD	Ball Dia.	Circuits	Stiffness K (kgf/μm)	Dynamic Load C(kgf)	Static Load Co(kgf)	Nut			Flange				Oil Hole			Double starts	Incomplete Thread		
	Nominal Dia.	Lead								D	L1	L2	TYPE	Form A(D6)	Form B(L8)	Form C(L9)	L7	D4	D5			M	L10
40-5K5	40	5	40.6	37.324	3.175	5	114	2470	9490	63	20	95	93	70	81.5	78	9	7					
40-6K5		6	40.8	36.744	3.969	5	127	3370	11780	20	109												
40-8K5		8				5	135	4360	14200	20	140												
40-10K5		10	41	36.132	4.763	5	136	4350	14180	20	164												
40-20K4		20				4	111	3520	11130	61	20	226	91	68	79.5	76							
40-16K5		16	41.2	35.522	5.556	5	141	5170	15510	68	20	220											
40-10K5		10				5	141	6340	18400	20	170												
40-12K5		12				5	142	6330	18380	20	178												
40-16K5		16				5	143	6300	18320	70	20	221	100	75	87.5	14	85						
40-20K4		20	41.4	34.91	6.35	4	115	5130	14440	20	225												
40-30K3		30				3	88	4000	11010	20	239												
40-25K4		25				4	114	5080	14350	65	25	259	95	72	83.5	80							
40-40K2		40				2	56	2660	6940	25	207												
40-12K5		12	41.6	34.299	7.144	5	146	7430	20790	75	20	185	110	85	97.5	93							
40-16K5		16				5	147	7400	20720	20	223												
45-8K5		8	46	41.132	4.763	5	145	4550	15860	70	20	137	105	80	92.5	90							
45-10K5	10				5	156	6810	21320	20	161													
45-12K5	12				5	158	6800	21290	20	183													
45-16K5	16				5	160	6780	21240	20	221													
45-20K4	20	46.4	39.91	6.35	4	129	5520	16760	75	25	221	110	85	97.5	93								
45-25K4	25				4	129	5480	16670	25	263													
45-40K3	40				3	93	4100	12020	25	295													
45-12K5	12				5	157	7830	23290	20	181													
45-16K5	16	46.6	39.299	7.144	5	159	7810	23230	20	243													
45-20K4	20				4	128	6360	18330	80	25	230	117	92	104.5	100								
50-5K5	5	50.6	47.324	3.175	5	129	2700	11940	70	20	95							100	75	87.5	85		
50-8K5	8	51	46.132	4.763	5	154	4730	17530	75	20	153												
50-10K5	10				5	166	7050	23300	25	166													
50-12K5	12				5	169	7040	23280	25	186													
50-15K5	15				5	171	7030	23250	82	25	214	2	118	92	105	16	100	11	M8×1P	10	8		
50-16K5	16				5	171	7020	23230	25	224													
50-20K4	20	51.4	44.91	6.35	4	138	5720	18340	25	218													
50-25K4	25				4	134	5690	18260	25	263													
50-30K4	30				4	136	5650	18170	25	299													
50-35K3	35				3	105	4430	13840	75	25	271	110	85	97.5	93								
50-40K3	40				3	104	4390	13750	25	295													
50-30K2	30	51.6	44.299	7.144	2	70	3560	9960	82	25	190	118	92	105	100								
50-12K5	12				5	173	9480	28776	25	200													
50-16K5	16				5	175	9450	28710	25	229													
50-20K5	20	51.8	43.688	7.938	5	176	9420	28630	85	25	281	121	95	108	103								
50-50K2	50				2	69	3980	10860	25	253													
50-20K4	20	52.2	42.466	9.525	4	149	9870	27420	86	25	245	118	92	105	100								
55-16K5	16	56.4	49.91	6.35	5	185	7420	26157	82	25	213												
63-10K5	10				5	192	7720	29190	25	173													
63-12K5	12	64.4	57.91	6.35	5	196	7720	29180	95	25	194												
63-20K5	20				5	208	7850	30020	25	270													
63-40K2	40				2	82	3310	11100	25	226	138	103	120.5	118									
63-12K5	12	64.8	56.688	7.938	5	202	10520	36440	98	25							194						
63-16K4	16				4	175	11010	34520	25	206													
63-20K5	20	65.2	55.466	9.525	5	222	13430	43530	107	25	286	147	112	129.5	127								
63-25K5	25				5	218	13390	43420	110	25	336												
70-16K4	16	72.2	62.466	9.525	4	187	11470	38040	115	25	216	155	120	137.5	135								
70-20K4	20				4	190	11450	37990	25	250													
80-10K5	10	81.4	74.91	6.35	5	223	8620	37980	110	25	170	150	115	132.5	130								
80-12K5	12	81.8	73.688	7.938	5	238	11740	47130	115	25	210												
80-16K4	16				4	206	12410	44960	125	25	216	170	135	152.5	150								
80-20K4	20	82.2	72.466	9.525	4	212	12400	44910	25	250													
80-25K4	25				4	211	12370	44840	120	25	296	165	130	147.5	145								
80-30K4	30				4	212	12340	44750	25	336													

Note: 1. Rigidity with preload: The axial load is calculated by 10% of dynamic load.
2. Circuits less than K5 also available.